

FOR LEASE RESTAURANT WITH PATIO

29880 Santa Margarita Pkwy, Rancho Santa Margarita, CA 92887

- ◆ Available Immediately
- ◆ Contiguous to ARCO AM/PM Gas Station
- ◆ 1,096 SF Interior + 447 SF Patio = 1,540 Total SF
- ◆ Busiest Intersection in Ranch Santa Margarita - 76,000 ADT

Available
Restaurant

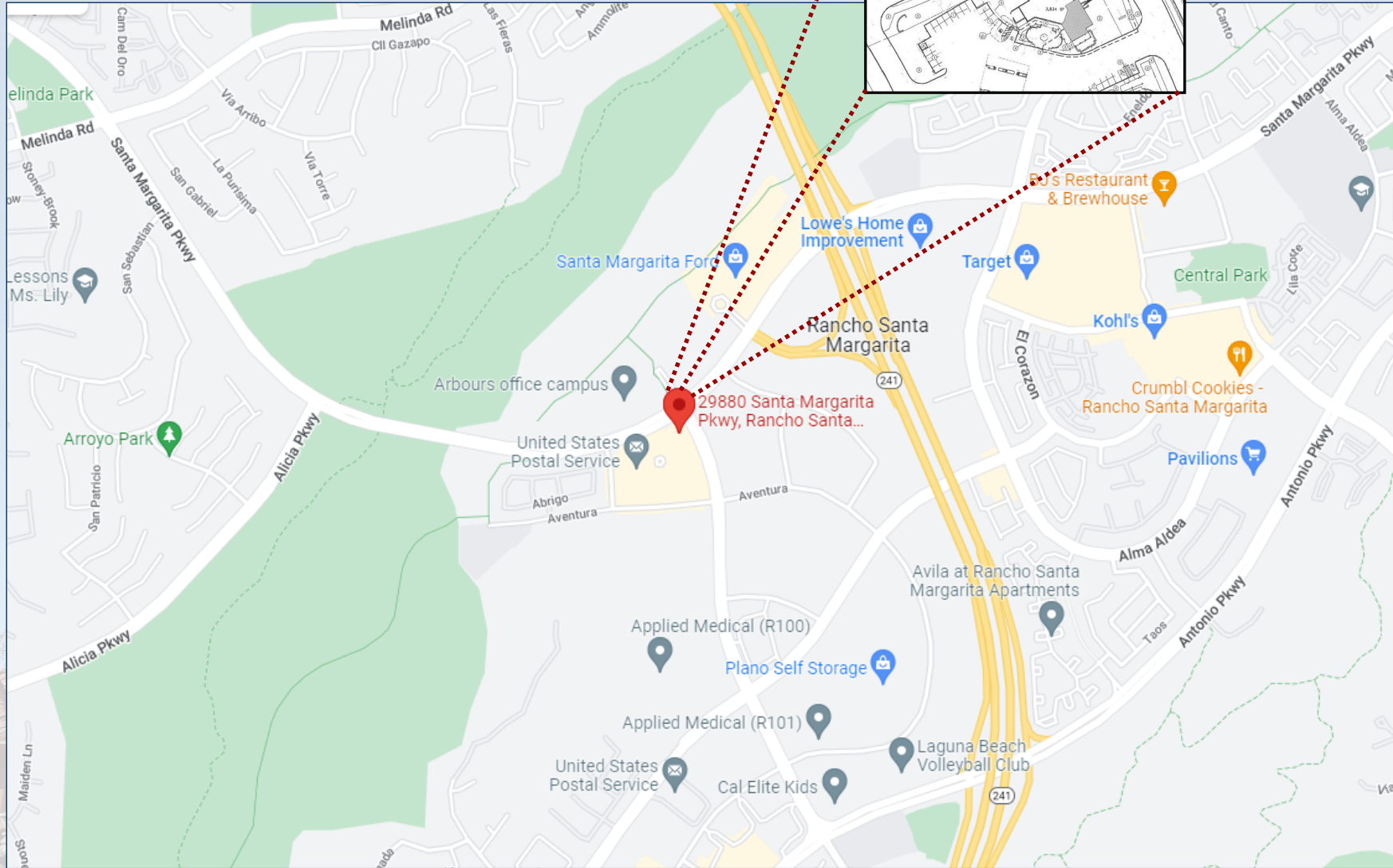


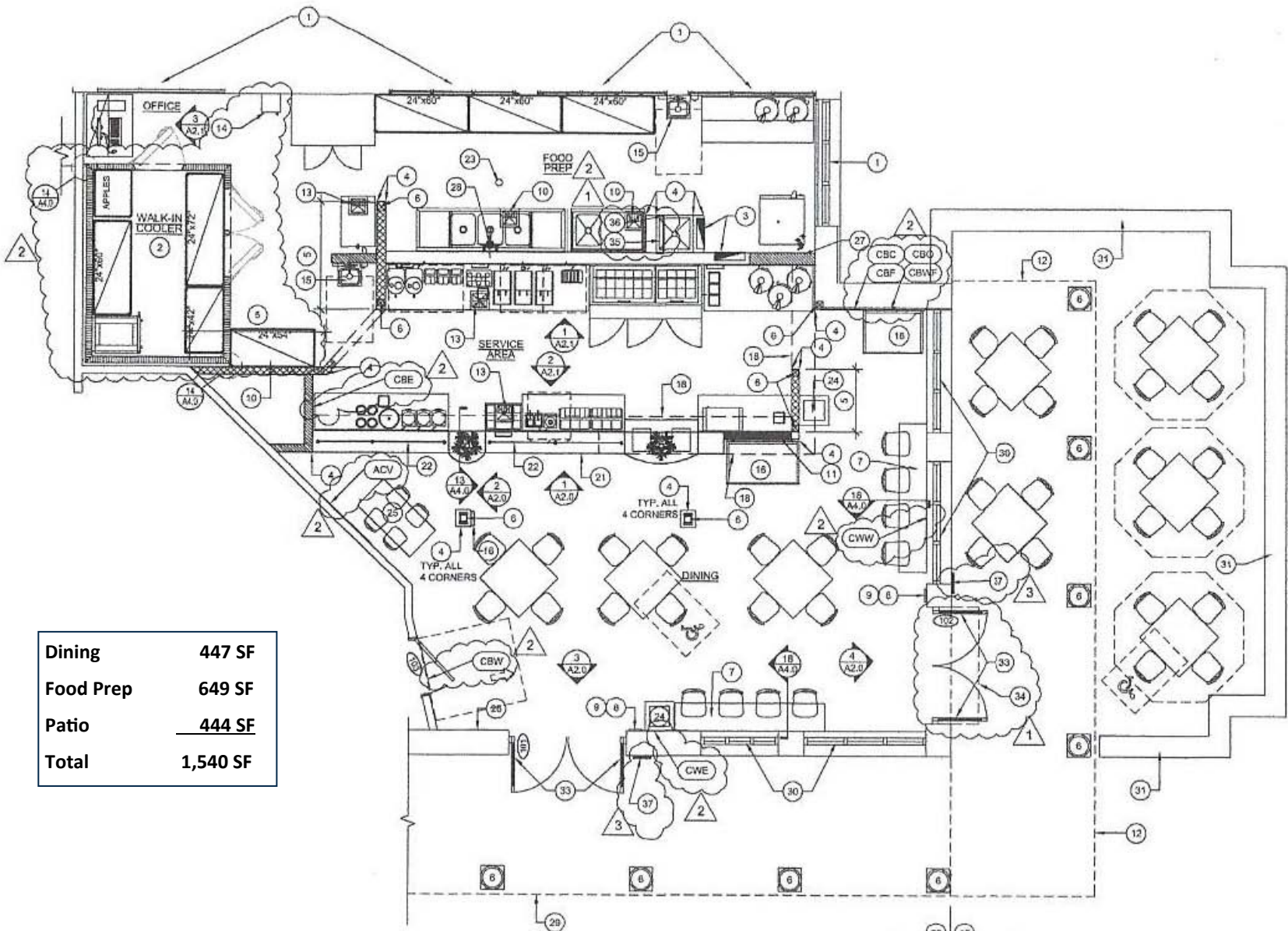
For Additional Info Contact:
Steve A. Abraham, Broker
Property Group International
949.673.5700
steve@pgire.com
CA DRE # 00873105

Information obtained from reliable sources, but is not guaranteed.



Map & Site Plan





Dining	447 SF
Food Prep	649 SF
Patio	444 SF
Total	1,540 SF

1 FLOOR PLAN
SCALE: 1/4" = 1'-0"



**Outside Patio
Dining Area**



Inside Dining Area

	Area	Occupancy
Dining	447 SF	32
Food Prep	649 SF	4
Patio	444 SF	30
Total	1,540 SF	66



Food Prep Area

